



The technical regulations is based on the following:

Parts for the INEX Legends Car represented in this nomenclature and split into three categories:

<p>CATEGORY « A »</p>	<p>No modifications are authorized. The parts in this category must remain in their original positions and fulfil the function/s for which they were originally intended. These parts must be genuine INEX Legends, or parts supplied by the appointed parts supplier.</p>
<p>CATEGORY « B »</p>	<p>Parts of the category "A" being the subject of specific prescriptions. Only the modifications or prescriptions indicated in the regulations or in this nomenclature are authorized.</p>
<p>CATEGORY « C »</p>	<p>The parts classed in this category are considered to be unrestricted, on the express condition that the function for which it was originally designed is not deviated from, that it does not fulfil any additional function and that it is located in the same place as the original part.</p>

The set of items or subassemblies that make up a part or assembly are deemed to belong to the same category as the part or assembly in question. Scrutineering may consist of comparing the part to be checked against a similar new genuine INEX part.

All parts not shown in the technical regulations are systematically classed in category "A" unless specified otherwise above.

The pictures published in this document only aim at making the nomenclature easier to understand. These pictures cannot be used for any comparison with original vehicle parts.



Nuts, screws, and bolts

Nuts, screws and bolts are in the category C unless mentioned in the nomenclature.

However, the following must be respected:

- the original diameters,
- the original screw thread,
- the material should be steel of equal or superior quality as that of the original part. The use of other materials (e.g., titanium) is forbidden. Any type of screw (stud, bolt or standard screws) is allowed, unless mentioned in the nomenclature. To assure the tightness of the screws, the use of locking wire is permitted. All the screws that have the function in roll-over structure, suspension or engine/transmission must be graded at least 10.9. All screws that are visible in bodywork, windows or wings can be made of stainless steel a2/a4. Pop rivet fasteners can be replaced by bolts.

Washers

All washers are in « C » category unless mentioned in the nomenclature and can be removed if desired.

It is allowed to add washer only to improve mechanical assemblies.

The use of washer for setting purpose is forbidden, unless specifically mentioned in the nomenclature.

Electrical loom

All the electrical looms belong to category “B” and must be genuine. The loom may be protected by non-retractable sheathes.

Protections

It is allowed to add protection of any kind over the mechanical elements of the car unless specifically mentioned in the nomenclature. These protections must have the sole function of protecting the elements.

For the driver wellness, it is allowed to add protections in the cockpit, these protections must be easily removable.

Supports

It is allowed, unless mentioned in the nomenclature, to add various types of support to improve the fitting of tubes, hoses and electrical looms of the car. No part modification is allowed to fit these supports. These supports must have the only function to maintain the elements for which they have been added and can only be made of tape, tie-wraps or other non-constructive material.

Bodywork

Only in order to manage correct assembly and adjustment of the bodywork part, it is allowed to slightly modify the bodywork parts and their respective supports. Adhesive tape may be put on the bodywork. In all circumstances, the only purpose of adhesive tape must be to protect or fasten the element onto which it has been applied.



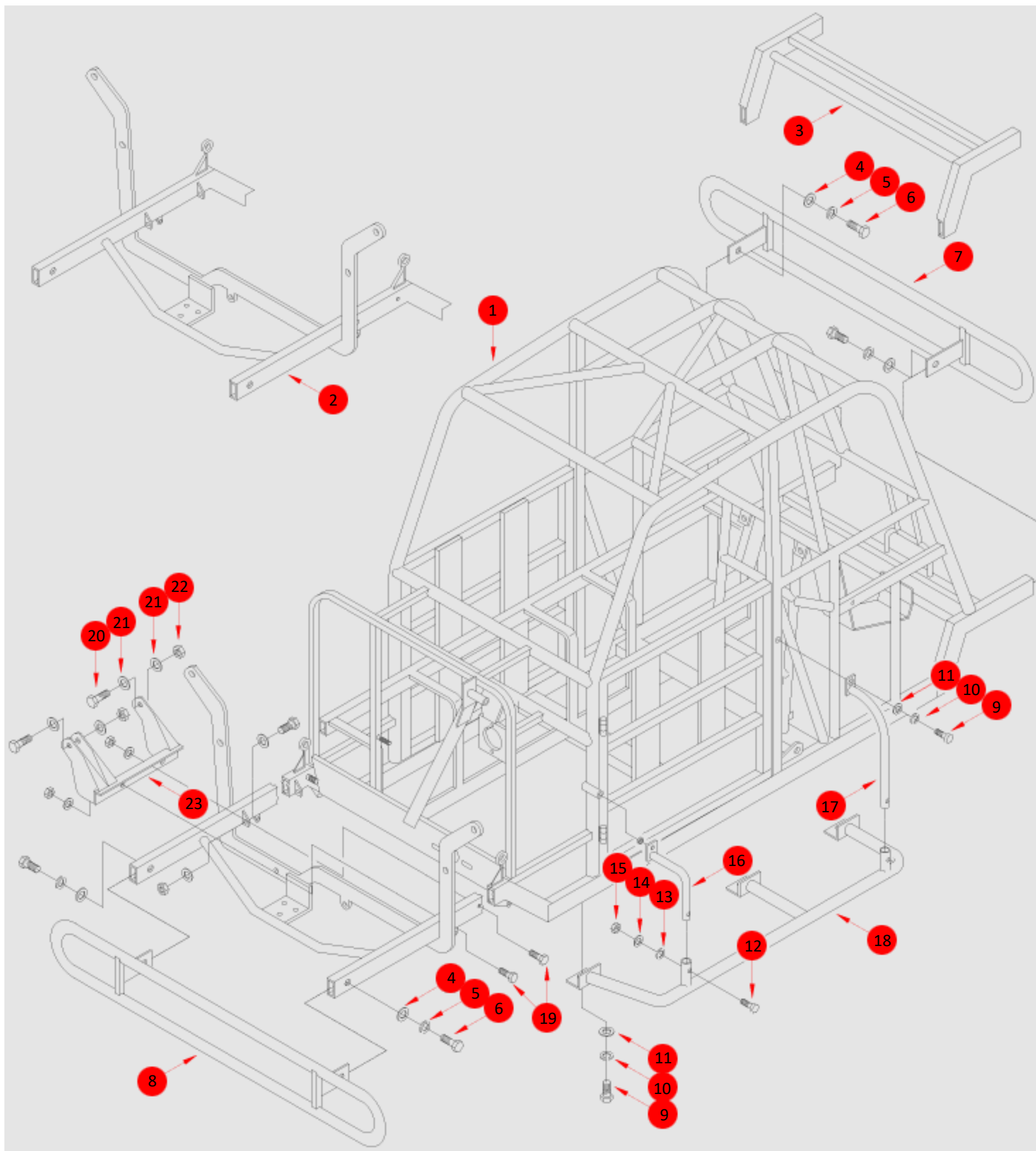
Change log		
Version	Date	Changes
0,4	15-05-2023	N/A (First public version)



Chassis

N°	DESCRIPTION	QTE	GROUP
1	LEGENDS CHASSIS	1	B*
	-34 FORD COUPE		
	SEDAN		
	STANDARD COUPE		
2	CHASSIS FRONT CLIP	0	B
3	CHASSIS REAR CLIP	0	B
4	5/16 WASHER FLAT	4	C
5	5/16 WASHER LOCK	4	C
6	5/16-18x1" BOLT	4	C
7	REAR BUMPER, PAINTED	1	A
	REAR BUMPER, CROME PLATED		
8	FRONT BUMPER, PAINTED	1	A
	FRONT BUMPER, CROME PLATED		
9	3/8-16x1" BOLT	10	C
10	3/8 WASHER LOCK	10	C
11	3/8 WASHER FLAT	10	C
12	1/4-20x1,75" BOLT	4	C
13	1/4 WASHER FLAT	4	C
14	1/4 WASHER LOCK	4	C
15	1/4 NYLOCK NUT	4	C
16	NERFBAR UPRIGHT RIGHT, PAINTED	2	A
	NERFBAR UPRIGHT RIGHT, CHROME PLATED		
	NERFBAR UPRIGHT LEFT, PAINTED		
	NERFBAR UPRIGHT LEFT, CHROME PLATED		
17	NERFBAR UPRIGHT LONG, PAINTED	2	A
	NERFBAR UPRIGHT LONG, CHROME PLATED		
18	NERFBAR, LEFT	2	A
	NERFBAR, RIGHT		
	NERFBAR SEDAN, LEFT		
	NERFBAR SEDAN, RIGHT		
19	1/2-13x2,5" BOLT	2	C
20	1/2-13x2,75" BOLT	2	C
21	1/2 WASHER FLAT	6	C
22	1/2-13 NYLOCK NUT	4	C
23	LEFT SIDE MOTOR MOUNT	1	B*

N°	DESCRIPTION
1	Chassis can be reinforced as described on the next page
23	Motor mount can be reinforced.





Chassis reinforcement



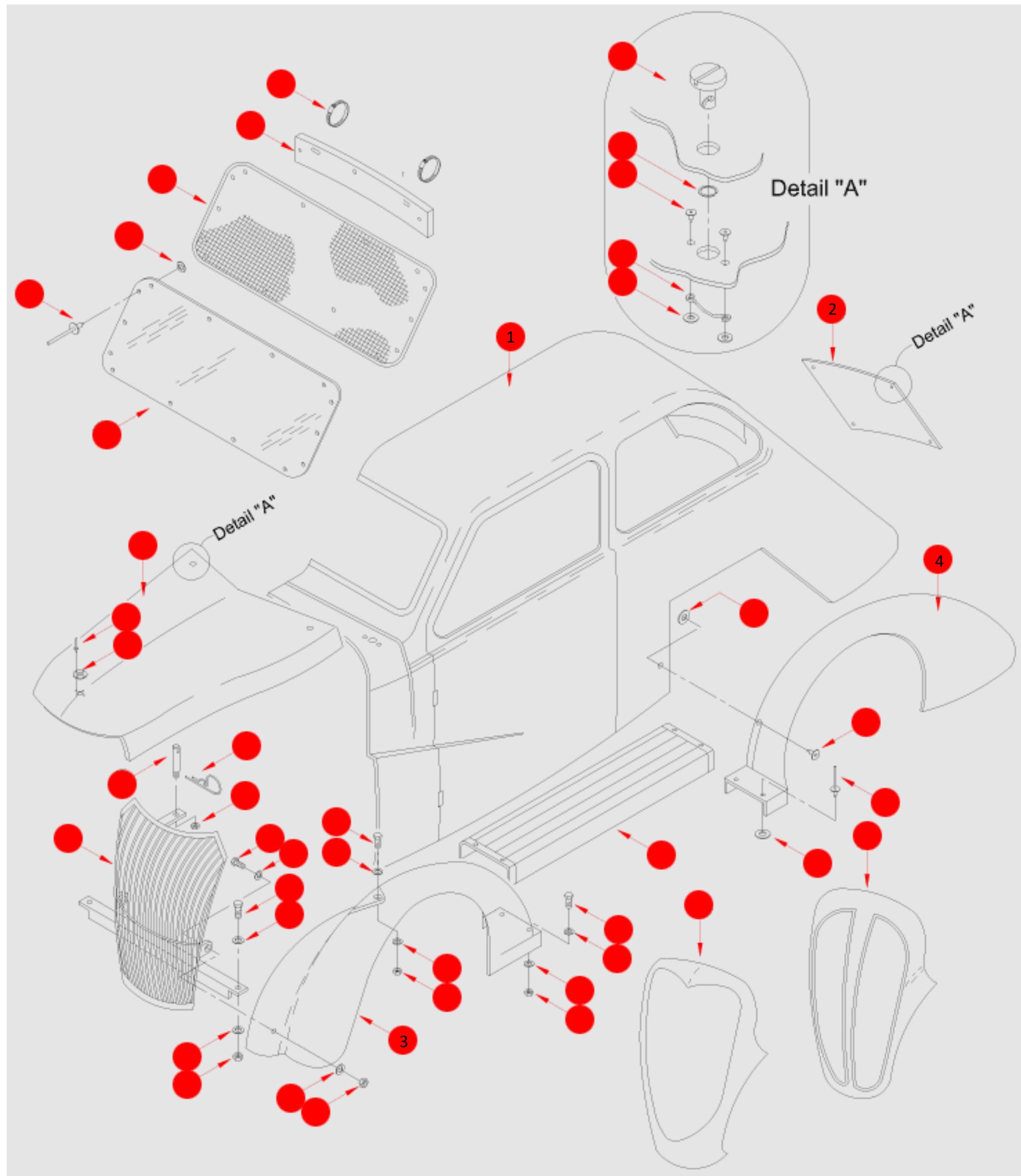
It is allowed to reinforce the vertical tube behind the driver seat. It is not allowed to make a junction either end.



Body

N°	DESCRIPTION	QTE	GROUP
1	MAIN BODY -34 CHEVY COUPE -34 FORD COUPE -34 FORD SEDAN -37 CHEVY SEDAN -37 FORD COUPE -37 FORD SEDAN -37 CHEVY COUPE -40 FORD COUPE	2 HALF/ 1 FULL	B
2	DECK LID -34 FORD/CHEVY COUPE -34 FORD SEDAN -37 CHEVY COUPE -37-40 FORD COUPE -SEDAN	1	B
3	FRONT FENDER -34 FORD -37 CHEVY -37 FORD -40 FORD	1 LEFT+1 RIGHT SAME MODEL	B
4			
5			
6			
7			
8			
9			
10			
11			
12			
13			
14			
15			
16			
17			
18			
19			
20			
21			
22			
23			
24			
25			
26			
27			
28			
29			
30			

N°	DESCRIPTION
1, 2, 3, 4	All body parts can be repaired, painted or wrapped in vinyl, but the general shape can not be changed.

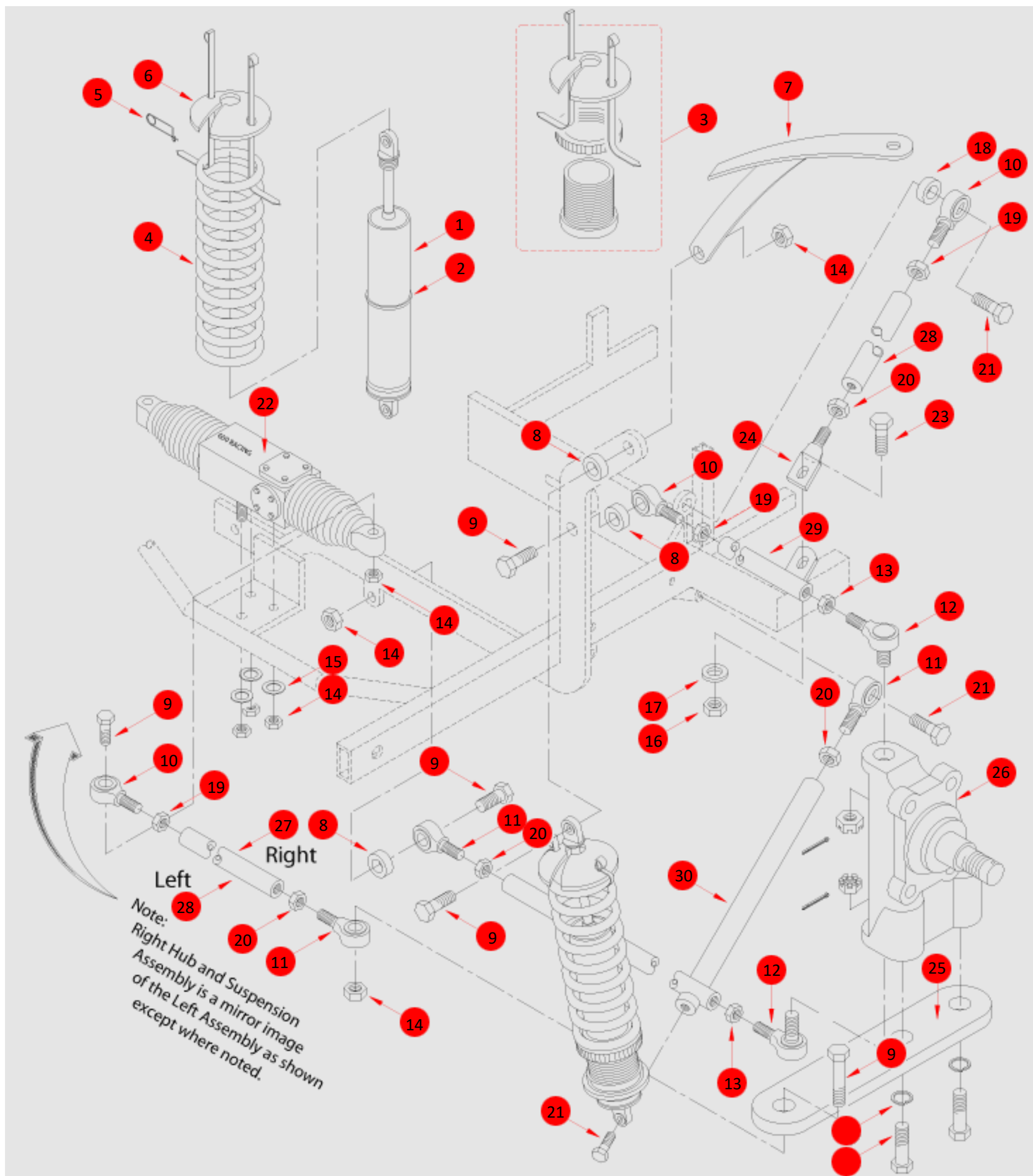




Front corner

N°	DESCRIPTION	QTE	GROUP
1	BILSTIEN SHOCK	2	A*
2	SHOCK SNAP RING	2	A
3	SHOCK KIT FLAT TOP	2	A
4	SPRING 10" 150, 175, 185, 225, 250, 275, 300, 325	2	A
5	SHOCK LOCK PIN	2	A
6	SHOCK TOP FLAT, CONE	2	A
7	FENDER BRACKET 40/30F, 37 CHECY, 37 FORD	2	A
8	1/2" CONTROL ARM SPACER	6	A
9	1/2-13x2,5" BOLT	10	C
10	ROD END 1/2x1/2 LH	6	C
11	ROD END 1/2x1/2 RH	6	C
12	BALL JOINT LARGE	4	C
13	3/4" NUT	4	C
14	1/2" NYLOCK NUT	9	C
15	1/2" WASHER FLAT	3	C
16	3/8-16 NYLOCK NUT	2	C
17	3/8" WASHER FLAT	2	C
18	1/4" SUSPENTION SPACER	2	C
19	1/2-20 NUT LT	6	C
20	1/2-20 NUT RT	6	C
21	1/2-13x1,5" BOLT	6	C
22	STEERING RACK	1	A
23	3/8-16x1" BOLT	2	C
24	UPPER A-ARM CLEVIS	2	A
25	STEERING ARM	2	A
26	SPINDEL	2	A
27	REAR TRAILING ARM 12"	2	A*
28	STRUT ARM 11"	4	A*
29	UPPER A-ARM	2	A
30	LOWER A-ARM LEFT RIGHT	2	A

N°	DESCRIPTION
1	Can be mounted either end up.
4	It is allowed to cover part number ect with tape.
27, 28	It is allowed to mount either 11" or 12" arm as front track rod both left and right.
28, 30	It is allowed to shothten the rear of the a-arms by up to 10mm to change suspention geometry.

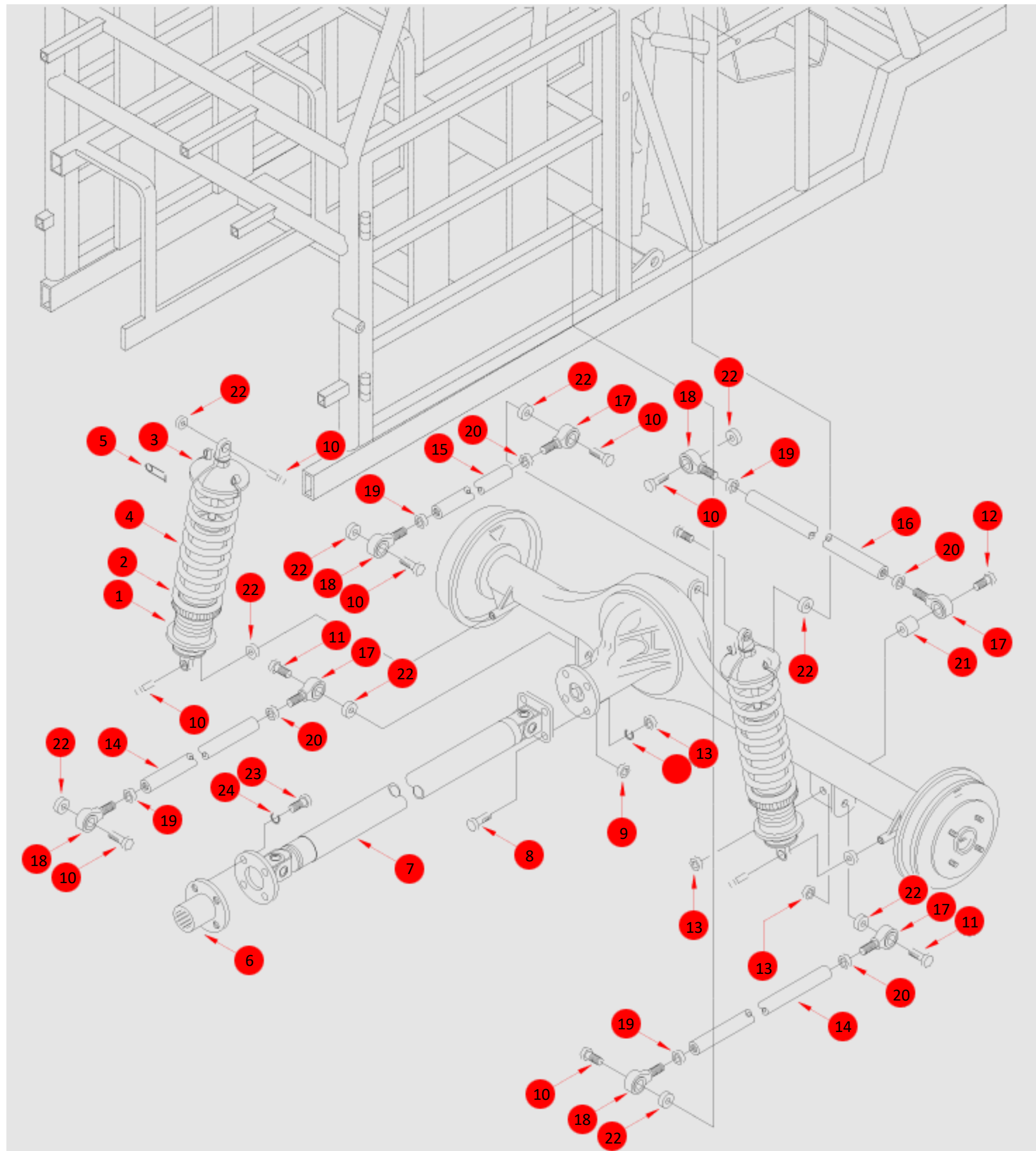




Rear suspension

N°	DESCRIPTION	QTE	GROUP
1	BILSTIEN SHOCK	2	A*
2	BILSTIEN NUT	2	A
3	SHOCK KIT FLAT TOP	2	A
4	SPRING 10" 150, 175, 185, 225, 250, 275, 300, 325	2	A
5	SHOCK LOCK PIN	2	A
6	SPROCKET ADAPTER	1	A*
7	DRIVESHAFT	1	A
8	5/16-18x1,25" BOLT	4	C
9	5/16 NYLOCK NUT	4	C
10	1/2-13x1,5" BOLT	9	C
11	1/2-13x1,75" BOLT	2	C
12	1/2-13x2,75" BOLT	1	C
13	1/2-13 NYLOCK NUT	8	C
14	TRAILING ARM 12"	2	A
15	UPPER REAR LINK 6,5"	1	A
16	PANHARD ROD 23,5"	1	A
17	ROD END 1/2x1/2 RH	4	C
18	ROD END 1/2x1/2 LH	4	C
19	1/2-20 NUT LT	4	C
20	1/2-20 NUT RT	4	C
21	3/4" PANHARD SPACER	1	A
22	1/4" SUSPENSION SPACER	11	A
23	5/16x1" BOLT	4	C
24	5/16" WASHER LOCKING	4	C

N°	DESCRIPTION
-	It is allowed to mount a drop stop limiting the downwards motion of the rear axle when the car is lifted, se picture below.
1	Can be mounted either end up but must be mounted on the inside of the chassis.
4	It is allowed to cover part number ect with tape.
6	Is the allowed to use longer from 4 cyl on the 3 cyl car.
15	Can be found in either 6" or 6½" both are allowed.





Controls

N°	DESCRIPTION	QTE	GROUP
1	5/16-18x0,75" BOLT	3	C
2	5/16" WASHER LOCKING	3	C
3	STEERING WHEEL 13.5"	1	C
4	STEERING WHEEL QUICK RELEASE	1	A
5	UPPER STEERING COLOUMN	1	A
6	3/4-16" NUT	2	C
7	ROD END 3/4x0,757" RH	1	C
8	5/16-18x2" BOLT	8	C
9	5/16-18 NYLOCK NUT	9	C
10	U-JOINT 3/4 (SPLINED OR UNSPLINED)	2	A
11	LOWER STEERING COLOUMN, ASSY	1	A
12	5/16-24x0,5" DRILLED BOLT	1	C
13	THROTTLE CAMLE ASSEMBLY	1	C
14	THROITTL STOP	1	C
15	THROTTLE PEDAL	1	A
16	CLUTCH PEDAL	1	A
17	BRAKE PEDAL	1	B
18	3/8-16x2" BOLT	1	C
19	ROD END 5/16x5/16 RH	1	A
20	SHIFTER KNOB	1	C
21	SHIFTER	1	A
22	3/8-16 NYLOCK NUT	1	C
23	SKIFTER ROD	1	A
24	3/8 NUT	1	C
25	3/4-20 NYLOCK NUT	2	C
26	SHIFTER BELL CRANK	1	A
27	5/16-18x1" BOLT	1	C
28	SHIFT ADAPPTOR	1	A
29	5/16-18x1.25" BOLT	1	C
30	BRAKE PEDAL SPACER	1	A
31	5/16-18x1.5" BOLT	1	C
32	ROD END 1/4x1/4 FEMALE RH	1	C
33	ROD END 1/4x1/4 RH	1	C

N°	DESCRIPTION
3	Part is free (No steering wheel with integrated display is allowed).
17	Can be reinforced in the area where the master cylinder is mounted. (Se picture below).

